

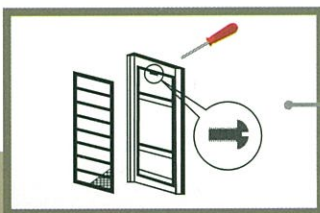
VENTILATION DOOR



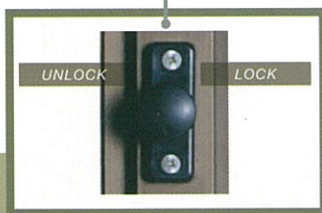
WHEN THE NATURE COMES THROUGH YOUR DOOR



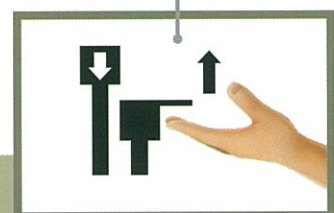
Ventilation door is originally design to adopt the Green Building Concept such as Energy Saving by letting the air fresh, enable to maximize the usage of natural lighting and many other points and benefits



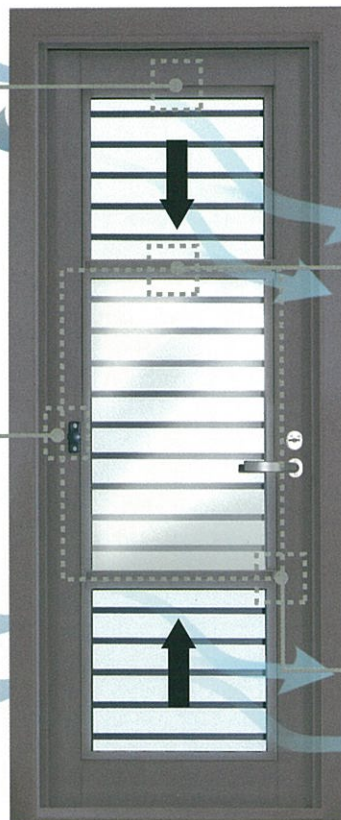
Open the sliding pane, release screw in the center of upper frame from inside, pulling grille upward. For installing, do the procedure in the opposite way



Pull knob to unlock
Pull left or right to hold unlock



To move the sliding, put hand under the catch to hold, and push along the track



Vertical Sliding



5 cm Open



10 cm Open



Fully open

Available 3 locking positions ▲

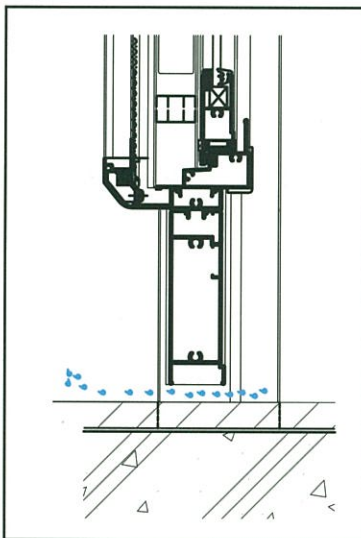
In case of none of chosen position, ▲
it will automatically lock into closed position

STRONG POINT

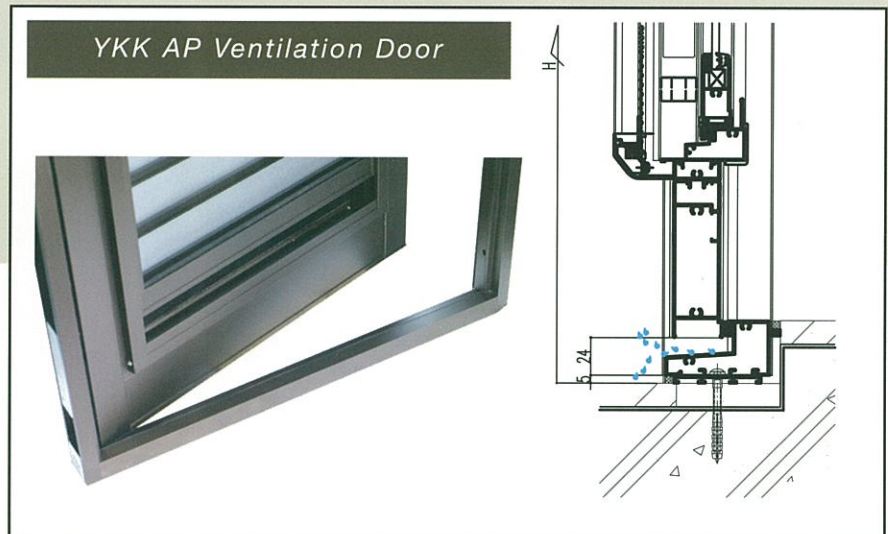
*Various Performance
are Maintained*

Standard Type

The performance is secured by the bottom sill



Without the bottom sill,
water and dust can break in easily



Various Performances are Maintained

Provided with bottom sill to prevent water and dust

Functional Benefit:

- Enable to get fresh air while door is closed and prevent damage from hitting by strong wind

Economical Benefit:

- Make efficient small space of room for no need to use many various type of windows
- Competitive price

Environmental Benefit:

- No need extra energy for exhaust fan and lighting by open the vertical sliding window
- Used for both ventilation and door way

Security Benefit:

- Crime and insect prevention with insect screen and the attachment



Anodize plus*



Powder coating*

Color Variation

Available in several
color option

*The shown color above are only some samples of YKK AP color collections

Product Performance

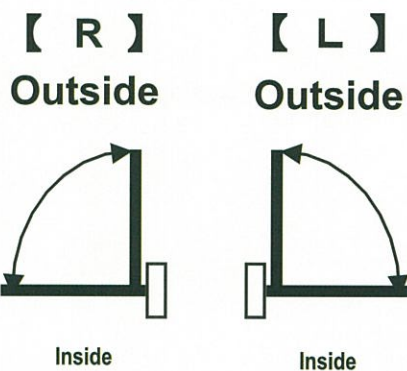
PERFORMANCE	DESIGN	ALLOWABLE	TESTING METHOD
STRUCTURAL	1000Pa	Deflection Max < L/125	ASTM E 330
WATER TIGHTNESS	50Pa	No Leakage	ASTM E 331
AIR INFILTRATION	10 - 100Pa	Grade A-4	JIS A 1516
OPEN CLOSE TRIAL	100.000cycles	"Normal Operation, no part damage"	JIS A 1550 Internal
OPENING FORCE	< 50N	Smooth Opening	

Product Characteristic

PROFILE DEPTH	70mm	
PART / HARDWARE	YKK AP STANDARD	
DIMENSION	W	$600\text{mm} < W \leq 900\text{mm}$
	H	$2000\text{mm} < H \leq 2200\text{mm}$
USAGE GLASS	Single Glass	5mm THK

Variation

Outside Opening Only



Composite Window Variation



Parts

Silver Handle With Lock

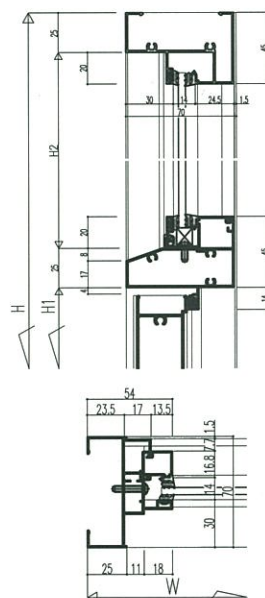
(Outside) Cylinder Key
(Inside) Thumb Turn

Aluminium Hinge

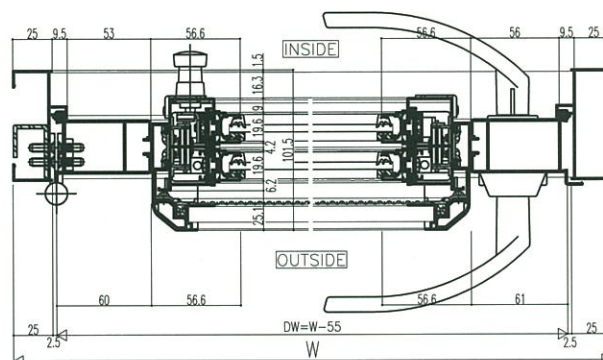
Door Closer (Optional)



Technical drawing of a window frame cross-section. The drawing is oriented vertically with 'OUTSIDE' on the left and 'INSIDE' on the right. The total height is labeled 'H'. Key dimensions include: 24 (top left), 5 (top left), 25 (top left), 10 (top left), 100 (top left), 64 (top left), 46 (top left), 25.1 (top left), 25.8 (top left), 1.5 (top left), 1.3 (top left), 16.6 (top left), 1.2 (top left), 77.5 (top left), 38 (top left), 65 (top left), 101.5 (top left), 35 (top left), 52 (top left), 101 (top left), 14 (top left), 25 (top left), 2 (top left). The drawing shows the internal components of the window frame, including the sash and the frame itself.



Technical drawing of a vertical window. The drawing shows a window with a frame and a grid of horizontal bars. The width is labeled W and the height is labeled H . The distance from the top of the window to the top of the frame is labeled H_2 . The distance from the bottom of the window to the bottom of the frame is labeled H_1 . The distance from the top of the window to the bottom of the frame is labeled H . The distance from the bottom of the window to the bottom of the frame is labeled a . The drawing also shows a small square in the top left corner and a small square in the bottom right corner.



UPPER SHIM RECEIVER

HOLE CAP

OUTSIDE

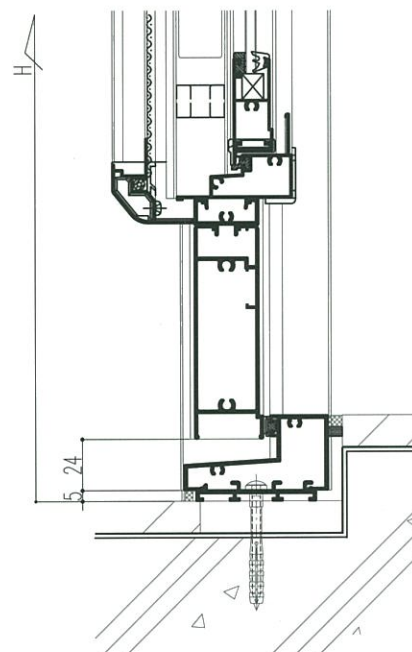
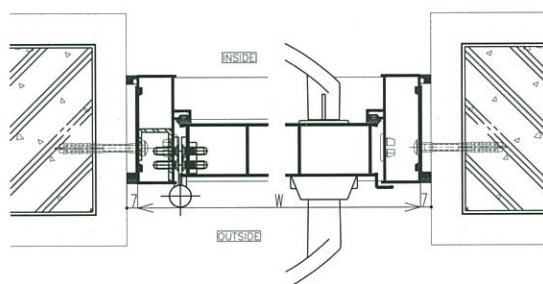
INSIDE

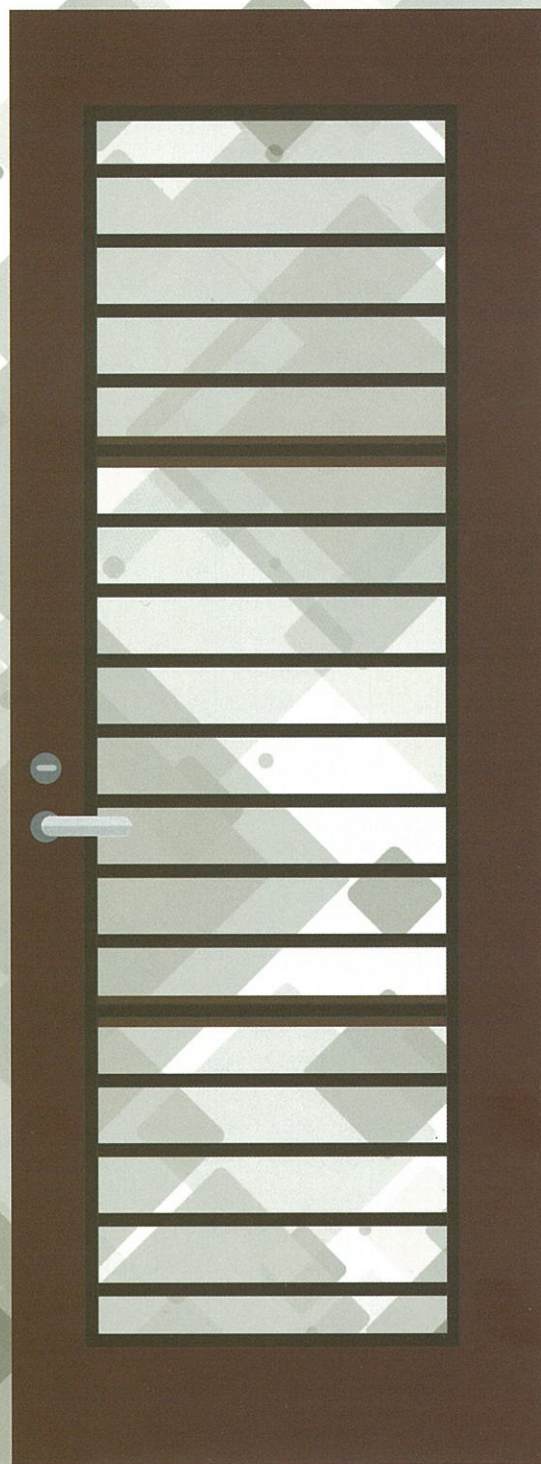
SEALANT OR MORTAR FILL

BOTTOM SHIM RECEIVER

CONCRETE

PLASTIC ANCHOR





 PT YKK AP INDONESIA

Head Office & Factory:

Kawasan Industri Manis
Jl. Manis Raya No. 23, Ds. Kadu,
Kec. Curug, Tangerang 15810, Banten, Indonesia.
Tel: (021) 591-9073. Fax: (021) 591-9074

www.ykkap.co.id

Jakarta Sales & Marketing Office:

Panin Life Center
Jl. S. Parman Kav. 91, 3A Floor,
Jakarta 11420, Indonesia.
Tel: (021) 569-56333 (Hunting). Fax: (021) 569-56335

Surabaya Branch Office:

Gedung Bumi Mandiri
Tower I, 6th Floor, Jl. Jend. Basuki Rachmat 129-137,
Surabaya, Jawa Timur 60271, Indonesia.
Tel: (031) 535-1800 (Hunting). Fax: (031) 535-1700